

Pressure - Temperature - Level - Flow - Analytical - Control - Indication - Logging

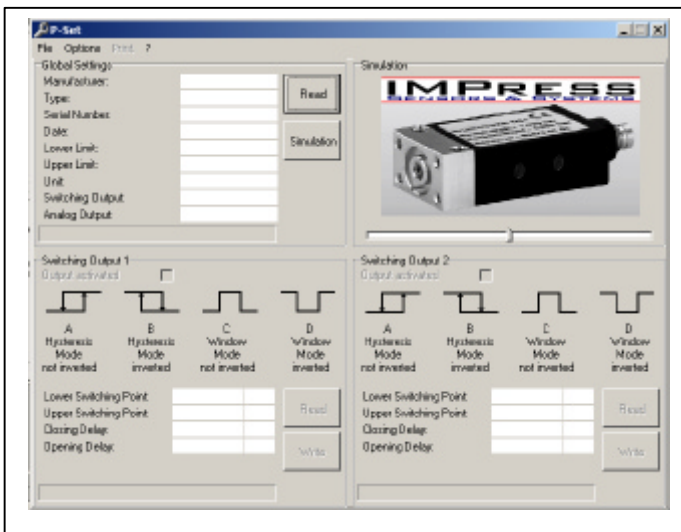
## Configuration & Software

The DS4 can be connected to a PC via a programming adapter and configured by software. Setting of following parameters is possible:

- switching mode (hysteresis or window mode)
- inversion of switching output
- switch on / lower switching point
- switch off / upper switching point
- switch on / switch off delay

The programming adapter is part of a programming kit containing also power supply, cable, and a CD-ROM with the configuration software P-Set.

All cables required for connecting the pressure switch have to be plugged to the programming adapter. The user requires only a Windows® PC with serial interface.



Installation of configuration software P-Set is very easy. P-Set is runs on all Windows® PC's (95, 98, ME, 2000, NT, XP). After software installation the adapter only has to be connected with the serial interface of the PC, the power supply, and the pressure switch. You can find more information on the software functions in the software manual.

Alternatively to the PC programming, IMPress offers the programming device P6. It is simply plugged between the DS4 pressure switch and the female connector. By means of 2 push-buttons and a 4-digit LED display all possible settings can be made.



Windows® is a registered trademark of Microsoft Corporation

Visit the website: [www.impress-sensors.co.uk](http://www.impress-sensors.co.uk)

Company Registration number: 4346738, VAT Number: 786 6596 54, Registered Address: 12 Kimberley Close, Reading, Berkshire, RG1 6LA