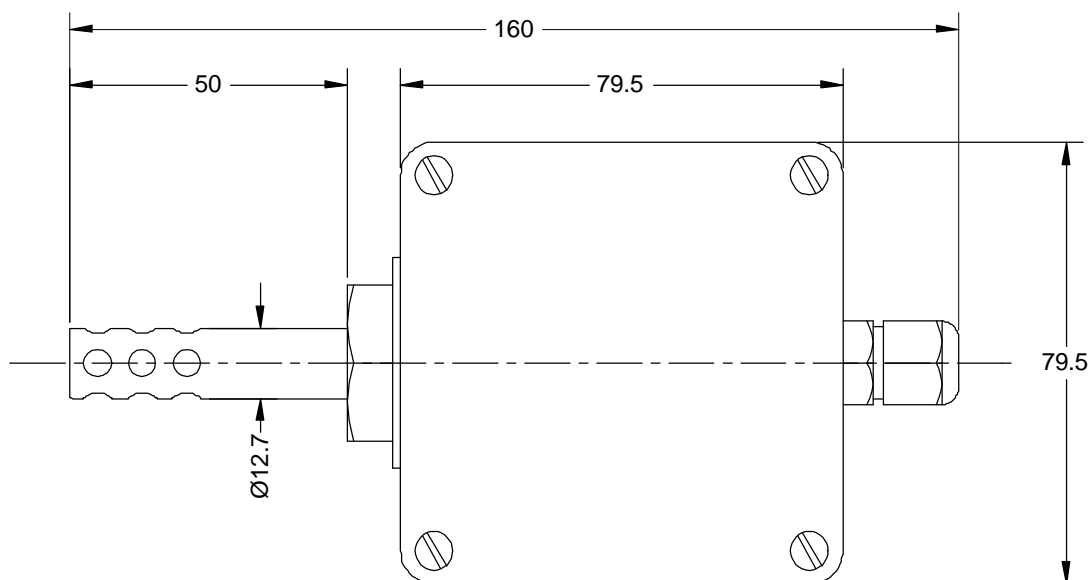
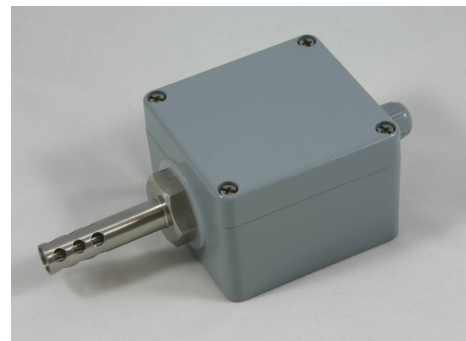


PPL10-T Thermocouple Exterior Air Temperature Sensor

Our PPL10 sensor is a rugged sensor suitable for measuring air temperature outdoors or in arduous applications. The sensor has a 316 stainless steel sheath that can be supplied with or without a protective shroud which does not affect sensor performance. The sensor is fitted with a variety of surface mounting terminal housing rated at least IP66 in which we can fit either a terminal block or transmitter. Various common options are shown on this data sheet but this is not an exhaustive list, please contact us with your requirements. Calibration is also available upon request.



| Specifications | |
|-----------------|--|
| Sensor Type | Type J, K or T thermocouple. |
| Operating Range | -40 to 85°C |
| Sheath Material | 316 stainless steel |
| Tolerance Band | BS EN 60584-2:1993 Class 1 or Class 2 |
| Wiring System | Simplex or Duplex |
| Head Types | A - Rectangular Aluminium Alloy, IP66 (as photo) B - KF Aluminium Alloy, IP68 C - ABS, IP67 E - KFS 316 stainless steel, IP68 (Other heads available upon request) |
| Head Options | A - Ceramic Terminal Block B - In Head Transmitter—SEM203P (Specify Range) C - Tails for Customers Own Transmitter |

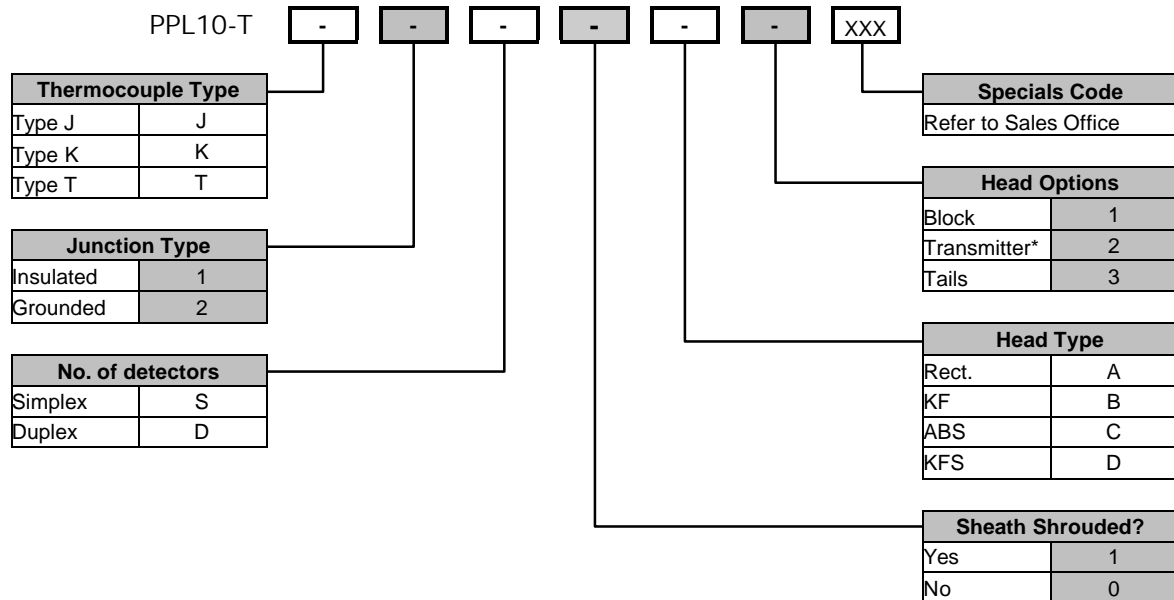
IMPRESS

SENSORS & SYSTEMS

Unit 6B, Mercury House, Calleva Park
Aldermaston, Berkshire, RG7 8PN
Tel: +44 (0)118 981 7980
Fax: +44 (0)118 981 7990
e-mail: info@impress-sensors.co.uk
Website: www.impress-sensors.co.uk

Pressure - Temperature - Level - Flow - Analytical - Control - Indication - Data logging

PPL10-T Thermocouple Exterior Air Temperature Sensor



NOTE: Some option combinations not possible

This data sheet gives details of the most popular options available for this type of sensor but is not intended to give an exhaustive list of possibilities. If you have a special requirement, please contact our sales office for assistance.

Visit the website: www.impress-sensors.co.uk